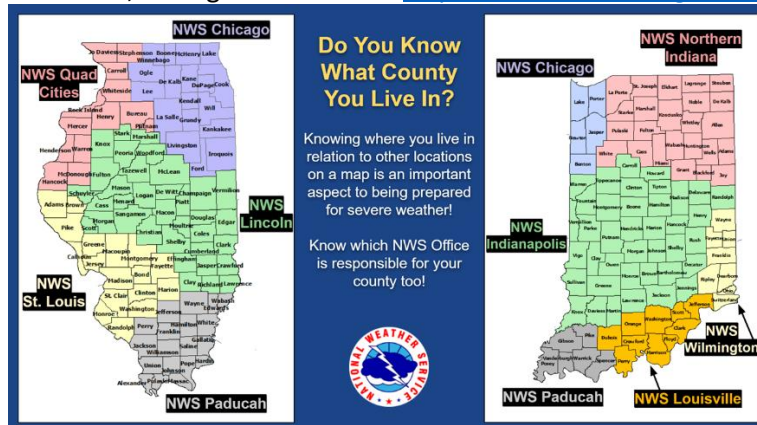


Private Land Basic Prescribed Burns

- Have a Burn Plan – Complete ahead of time and include location, acceptable weather conditions for day of burn (temperature, wind direction & velocity, relative humidity, smoke sensitive areas, and dispersion), local fire and police notification, purpose/goals/objectives, map, etc.
- Notify on the day of the burn the local fire department and county dispatcher and/or police department
- Make a reasonable attempt to notify all adjoining landowners and occupants of the approximate time and date of the burn, using a method that is reasonably assured to provide notice before the planned burn. Document the method. Methods include:
 - Posting the property to be burned
 - Contact adjoining landowner by phone, in person, or delivery of written notice
- Obtain IL EPA Smoke Permit (unless your burn plan is submitted to the IDNR and has a permit) <https://epa.illinois.gov/content/dam/soi/en/web/epa/topics/forms/air-forms/documents/open-burning/open-burning-permit-app.pdf>
- Obtain IDNR Burn Permit for Southern IL (Jackson, Union Alexander Johnson, Pope, Hardin, Massac, Pulaski, and Alexander Co.), available from Ben Snyder: benjamin.snyder@illinois.gov
- Obtain the appropriate fire weather forecast for your location, available at:
 - Southern Area, Paducah fire weather: <https://www.weather.gov/pah/fire>
 - West Central, St. Louis fire weather: <https://www.weather.gov/lx/fire>
 - Central, Lincoln fire weather: <https://www.weather.gov/ilx/fire>
 - Northwest, Quad Cities fire weather: <https://www.weather.gov/dvn/fire>
 - Northeast, Chicago fire weather: <https://www.weather.gov/lot/fire>



- Checklist for implementing the burn:
 - Make sure fire breaks are in place around the Burn Unit, before lighting fire
 - Weather conditions are within prescription
 - Equipment tested and working
 - Crew has tools that can be used to extinguish fire (water, rakes, flappers, etc.)
 - Crews are briefed on the plan for igniting and holding the fire within the unit
 - Hazards are pointed out such as roads, structures, utilities, ravines, etc.
 - Test fire completed to observe the smoke lift and dispersal
 - Escaped fire plan discussed
- Illinois has a Certified Prescribed Burn Manager Program if you need assistance writing a plan or implementing a burn, there may be assistance available.